





**Operation Instructions please follow the steps below**

**Step 1:** Included in the box are...

- (1) 30W solar panel\*2PCS
- (2) LED Lamp\*50PCS
- (3) 250W Li-iron batteries\*1Set
- (4) Li-iron hand-set battery \*50PCS

**Solar panel system of Led Africa Schoolchild Lamp**

Item	Description	Standard Packing Quantity	Warranty	Life Time
 <b>Solar Panel</b>	<ul style="list-style-type: none"> <li>• Specification: 30W±5% PV Module with 3m cable</li> <li>• Dimension: 689 x 356 x 32mm (L x W x H)</li> <li>• 10KG/SET</li> </ul>	2	1 year	20 years
 <b>Charging station</b>	<ul style="list-style-type: none"> <li>• Specification: 3.3V &amp; 100±10% AH (300WH) / per set</li> <li>• Dimension: 240 x 175 x 190mm ( L x W x H )</li> <li>• 9KG/SET</li> </ul>	1	1 year	3 years
 <b>Handset Battery</b>	<ul style="list-style-type: none"> <li>• Specification: 3.3V &amp; 1.4±10% AH</li> <li>• Dimension: 30 x 30 x 90mm ( L x W x H ),</li> <li>• 3KG/SET</li> </ul>	50	1 year	3 years
 <b>LED Lamp</b>	<ul style="list-style-type: none"> <li>• Specification: 1Watt,3.3V, 250mA±10%</li> <li>• Dimension: 120 x 120 x 80 mm (L x W x H)</li> <li>• 3KG/SET</li> </ul>	50	1 year	10 years

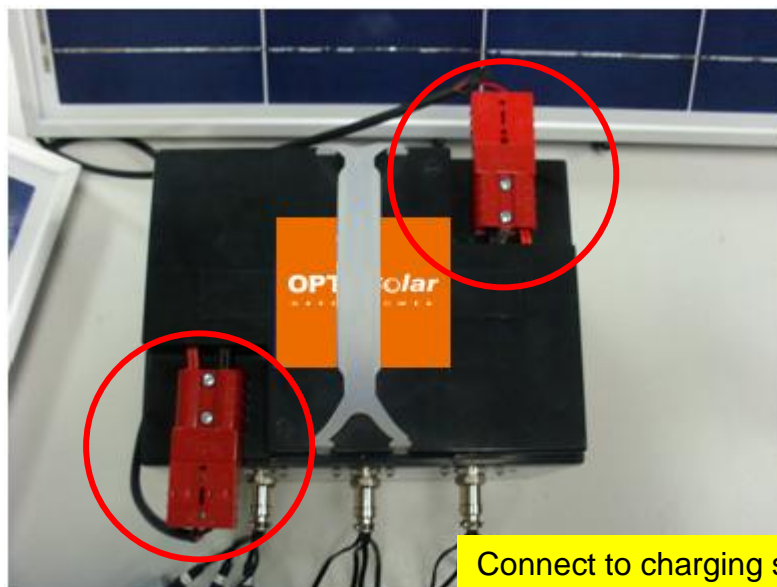
**Step 2:** The charging station contains six plugs including three on each main side. Connect the ports at each plug. Each plug contains four ports.



**Step 3:** Connect the hand-set batteries to each port and connect the solar panel to the charging station.

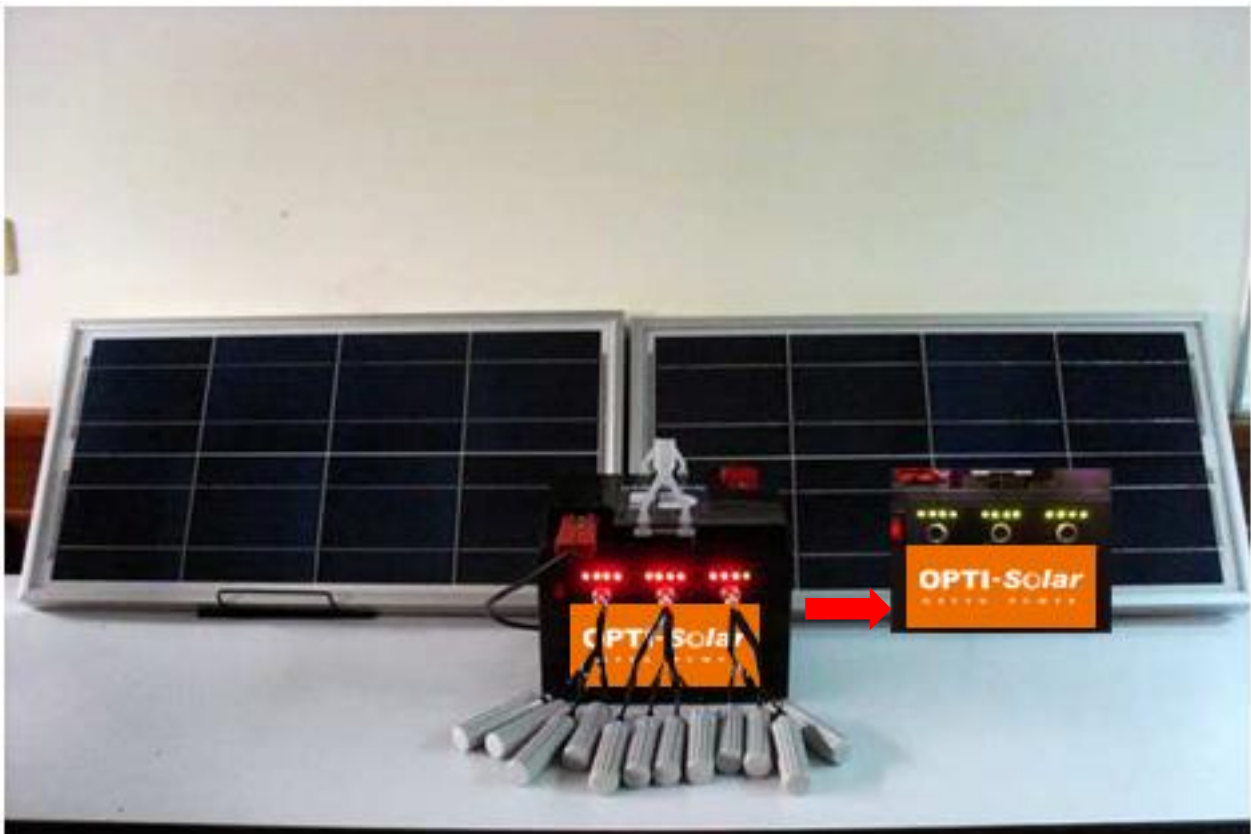


Connect to handset battery



Connect to charging station

**Step 4:** After connecting, please turn the red switch on and the light of each port will be on (red color). After 2.5 hours the red light will change to green indicating that the hand-set batteries are full charged. The charged hand-set battery can continuously power the 1watt LED lamp for 4.5 hours.



**Step 5**: There is no switch. Please take off the battery when you finished.

