

# **OPTI-Solar**

## **SolarPower Pro**

User's Manual

Management Software for SP Premium (SNMP & Modbus)

# Table of Contents

<b>1.</b>	<b>SolarPower Pro Client Overview</b> .....	<b>2</b>
<b>1.1.</b>	<b>Introduction</b> .....	<b>2</b>
<b>2.</b>	<b>SolarPower Pro Client Install and Uninstall</b> .....	<b>2</b>
<b>2.1.</b>	<b>System Requirement</b> .....	<b>2</b>
<b>2.2.</b>	<b>Software Install</b> .....	<b>2</b>
<b>2.3.</b>	<b>Software Uninstall</b> .....	<b>7</b>
<b>3.</b>	<b>Function Overview</b> .....	<b>7</b>
<b>3.1.</b>	<b>Startup</b> .....	<b>7</b>
<b>3.2.</b>	<b>Configuration</b> .....	<b>7</b>
<b>3.2.1.</b>	<b>Language</b> .....	<b>7</b>
<b>3.2.2.</b>	<b>Port Modifications</b> .....	<b>8</b>
<b>3.2.3.</b>	<b>Add/Delete</b> .....	<b>8</b>
<b>3.2.4.</b>	<b>Setting Saved</b> .....	<b>9</b>
<b>3.3.</b>	<b>Quick Access to SolarPower Pro Client</b> .....	<b>9</b>
<b>3.4.</b>	<b>Message Board and Records</b> .....	<b>10</b>
<b>3.5.</b>	<b>Exit</b> .....	<b>11</b>

# 1. SolarPower Pro Client Overview

## 1.1. Introduction

SolarPower Pro Client is a SolarPower Pro monitoring software on client side. It can remote access SolarPower Pro Web service easily and also receive specific messages from SolarPower Pro Server side.

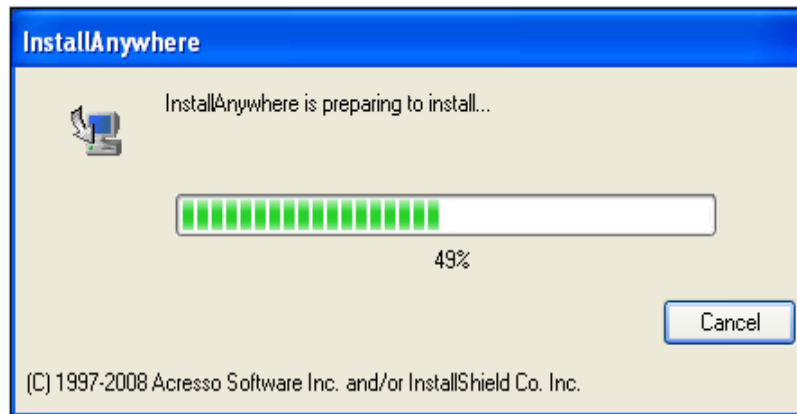
# 2. SolarPower Pro Client Install and Uninstall

## 2.1. System Requirement

- 128 MB physical memory at least (256 MB is recommended)
- 128 MB hard disk space at least
- Administrator authority is required
- More than 16-bit colors and 800 x 600 or above resolution display is recommended
- TCP/IP protocol must be installed for network management
- An available communication port is needed
- Platforms supported by software are listed below:
  - Windows XP
  - Windows VISTA
  - Windows 2003(32-bit & x64-bit)
  - Windows 2008(32-bit & x64-bit)
  - Windows 7(32-bit & x64-bit)

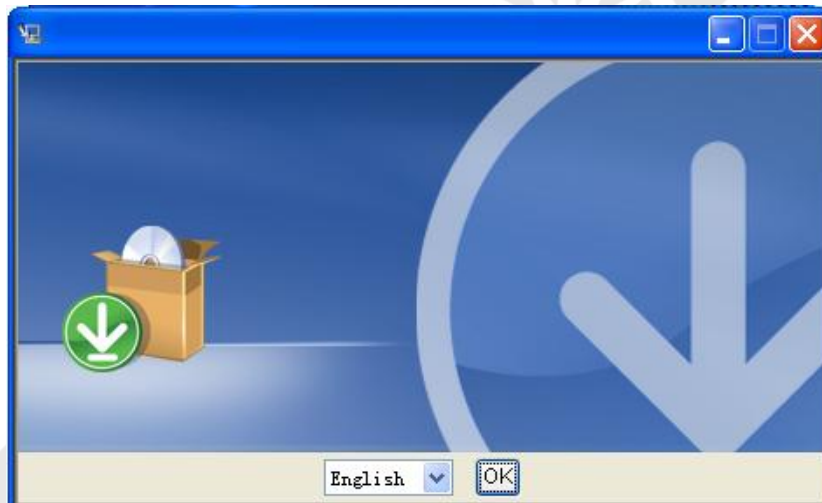
## 2.2. Software Install

**Step 1** After clicking install, it will display the installation in process. Refer to the diagram 2-1.



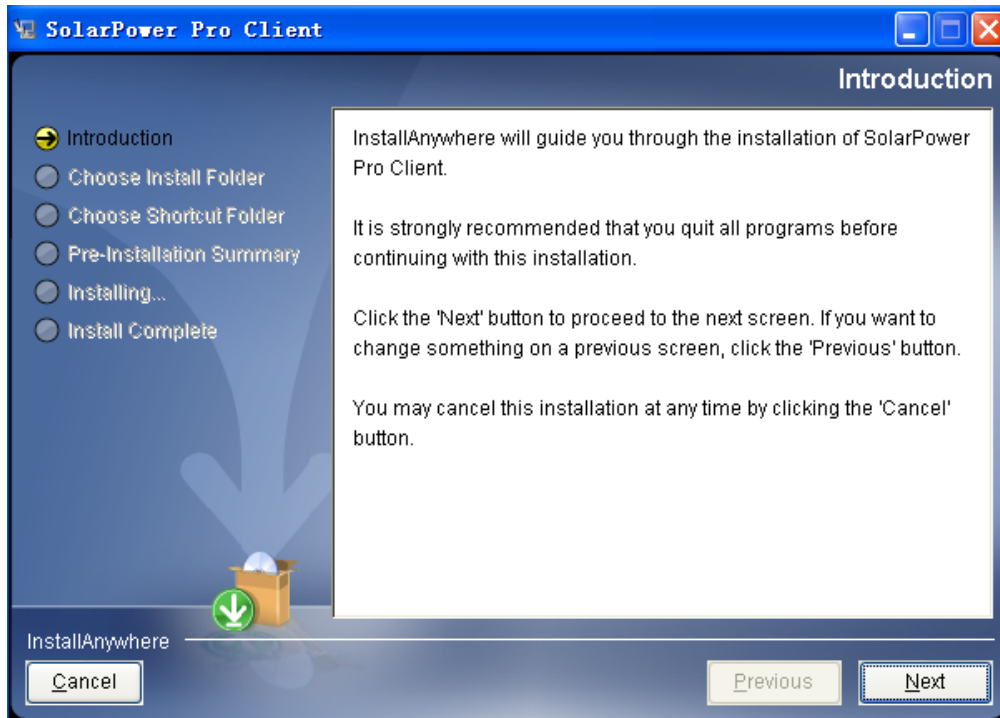
**Diagram 2-1**

**Step 2** Choose wanted language and click "OK" as diagram 2-2.



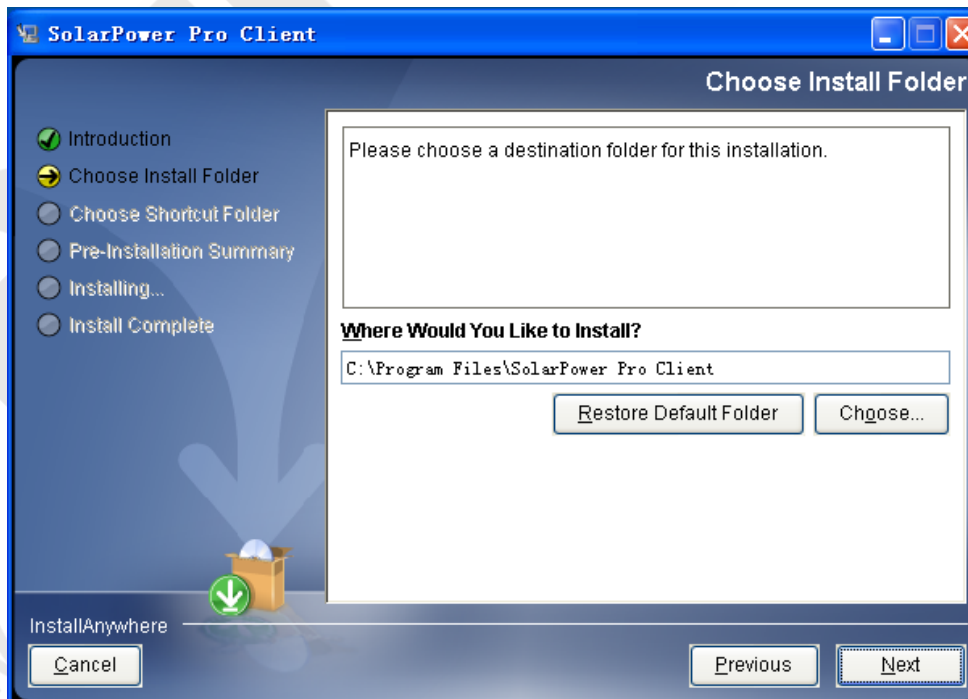
**Diagram 2-2**

**Step 3** Click "Next" to proceed to the next screen as Diagram 2-3.



**Diagram 2-3**

**Step 4** Click "Choose" button to change the default folder. After choosing the installed folder, click "Next" button. Refer to the following diagram 2-4.



**Diagram 2-4**

**Step 5** Choose the shortcut folder and click "Next" button. Refer to the following diagram 2-5.

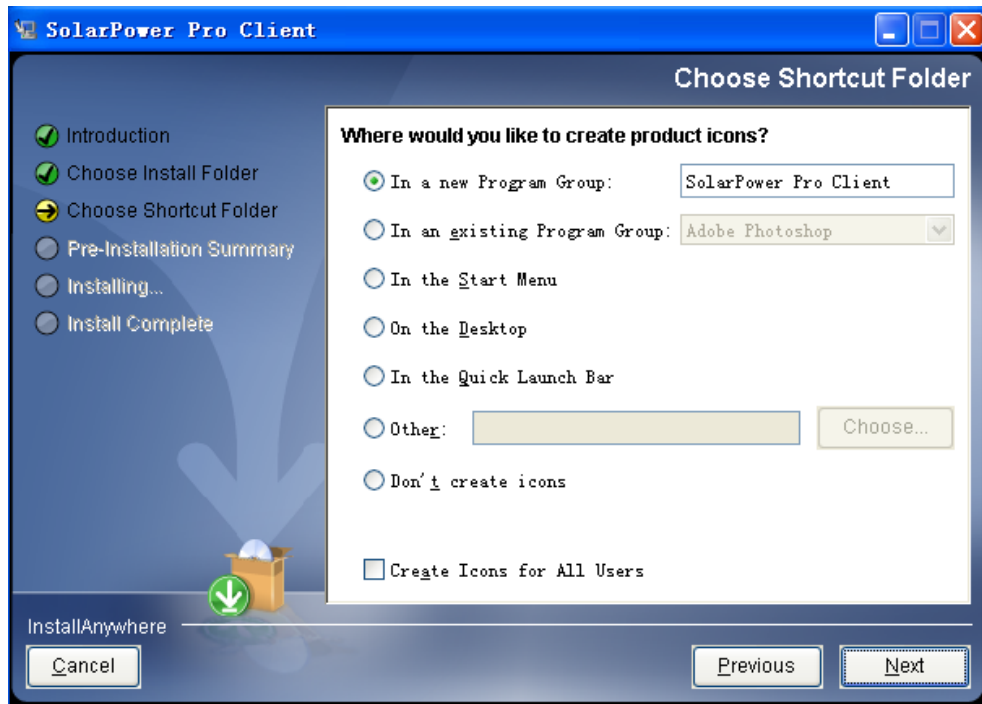


Diagram 2-5

**Step 6** It will display the software summary before installation. Click "Install" button to start the installation and refer to Diagram 2-6.

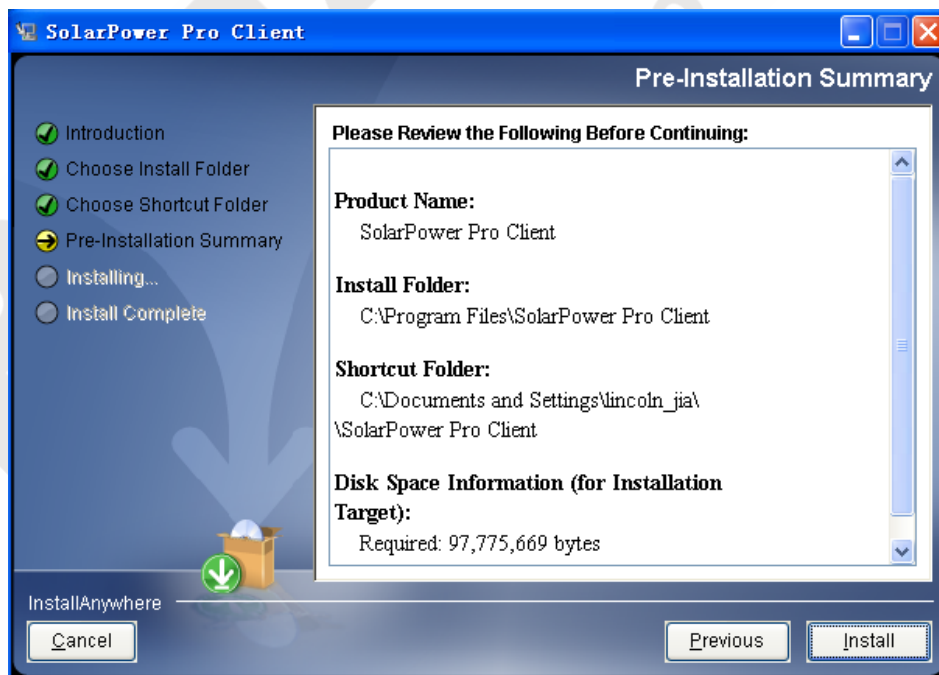
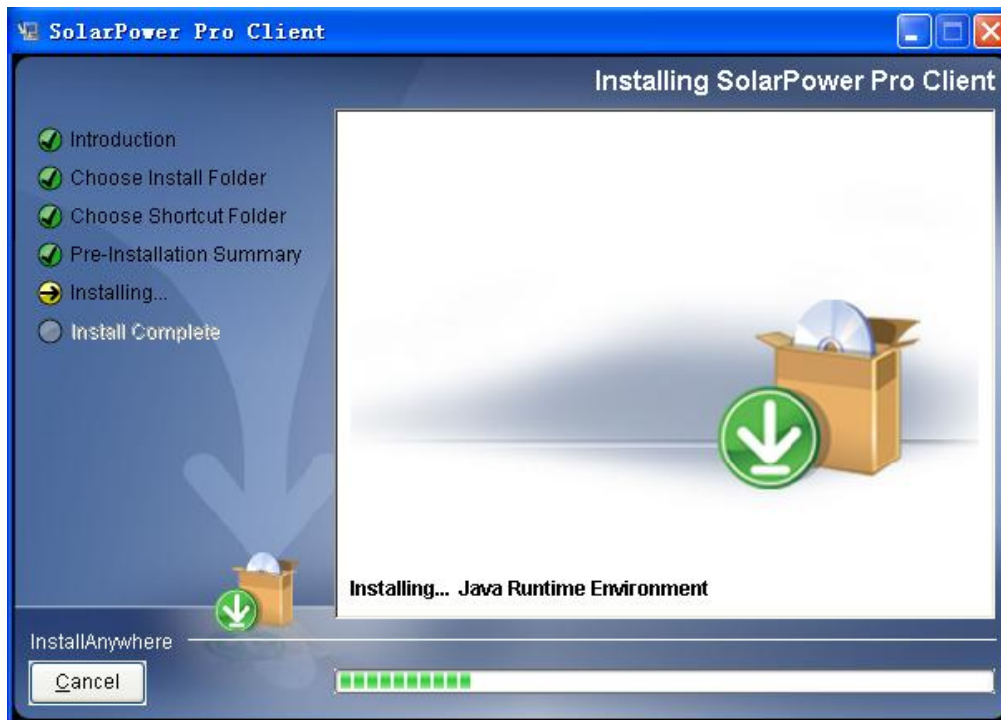


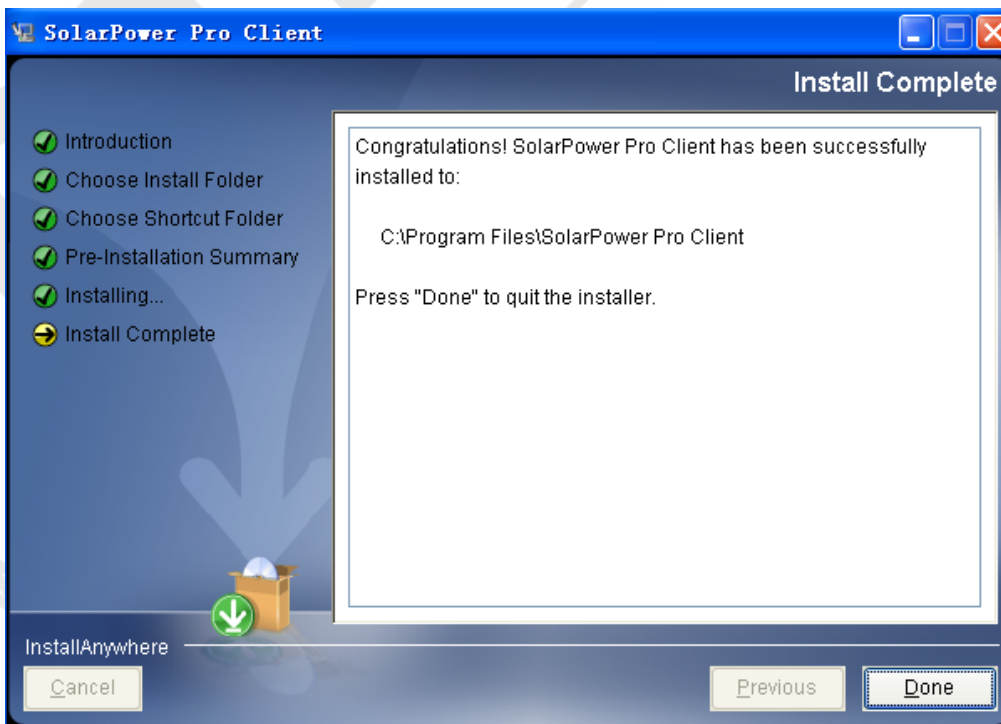
Diagram 2-6

**Step 7** Installing, refer to Diagram 2-7.



**Diagram 2-7**

**Step 8** Click "Done" button to confirm the installation completely. Refer to Diagram 2-8.



**Diagram 2-8**

## 2.3. Software Uninstall

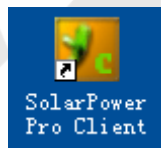
Please choose Start >> All Programs >> SolarPower Pro Client>> Uninstall. Then follow the on-screen instruction to uninstall the software.

**Note:** Before uninstall software, you must stop all software programs first and then log in as "Administrator"! Otherwise it can't be uninstalled completely.

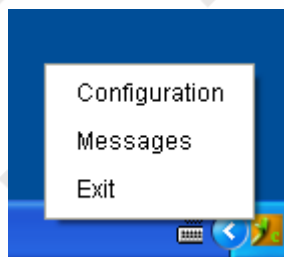
## 3. Function Overview

### 3.1. Startup

The Installer will leave a shortcut icon called "SolarPower Pro Client" on your desktop after installation. (Refer to diagram 3-1) Simply double click the shortcut. Then it will start the software and display an icon located in taskbar. It will display all functions by clicking right button of the mouse. Refer to below diagram 3-2.



**Diagram 3-1**



**Diagram 3-2**

### 3.2. Configuration

#### 3.2.1. Language

Currently, software offers ten languages for selection, Refer to A section in diagram 3-3:

- ✓ Chinese
- ✓ English



- ✓ German
- ✓ Italian
- ✓ Polish
- ✓ Portuguese
- ✓ Russian
- ✓ Spanish
- ✓ Ukrainian
- ✓ French

When first using the software, it will search proper language to display according to OS language.

### **3.2.2. Port Modifications**

If port conflict occurs while using SolarPower Pro Client, you may modify value of tray port. The default setting for tray port is 38691. You may modify the value of tray port to any number between 0 to 65536. If value entry is used, the system will remind users to enter another number again. Refer to B section in diagram 3-3.

**NOTE:** To avoid possible conflicts, please do NOT enter value with at least 4 digits.

### **3.2.3. Add/Delete**

To add remote server (IP address: 192.168.107.15, tray port: 58080) to the panel, please follow below steps: (Refer to C section in diagram 3-3)

1. Enter "192.168.107.15" into Remote server IP section
2. Enter "58080" into Assigned port section
3. If you want to access it from function menu directly, please select "Added to the tray".
4. If you want to receive event messages of this server, please select "Message receiving".
5. Click "Add" button to add into the list.

Please follow below steps to delete the server from list:

1. Select remote server you want to remove from list.
2. Click "Delete" button to remove.

### 3.2.4. Setting Saved

Click "Apply" button to save all changes in Configuration page. Click "Cancel" to stop the changes.

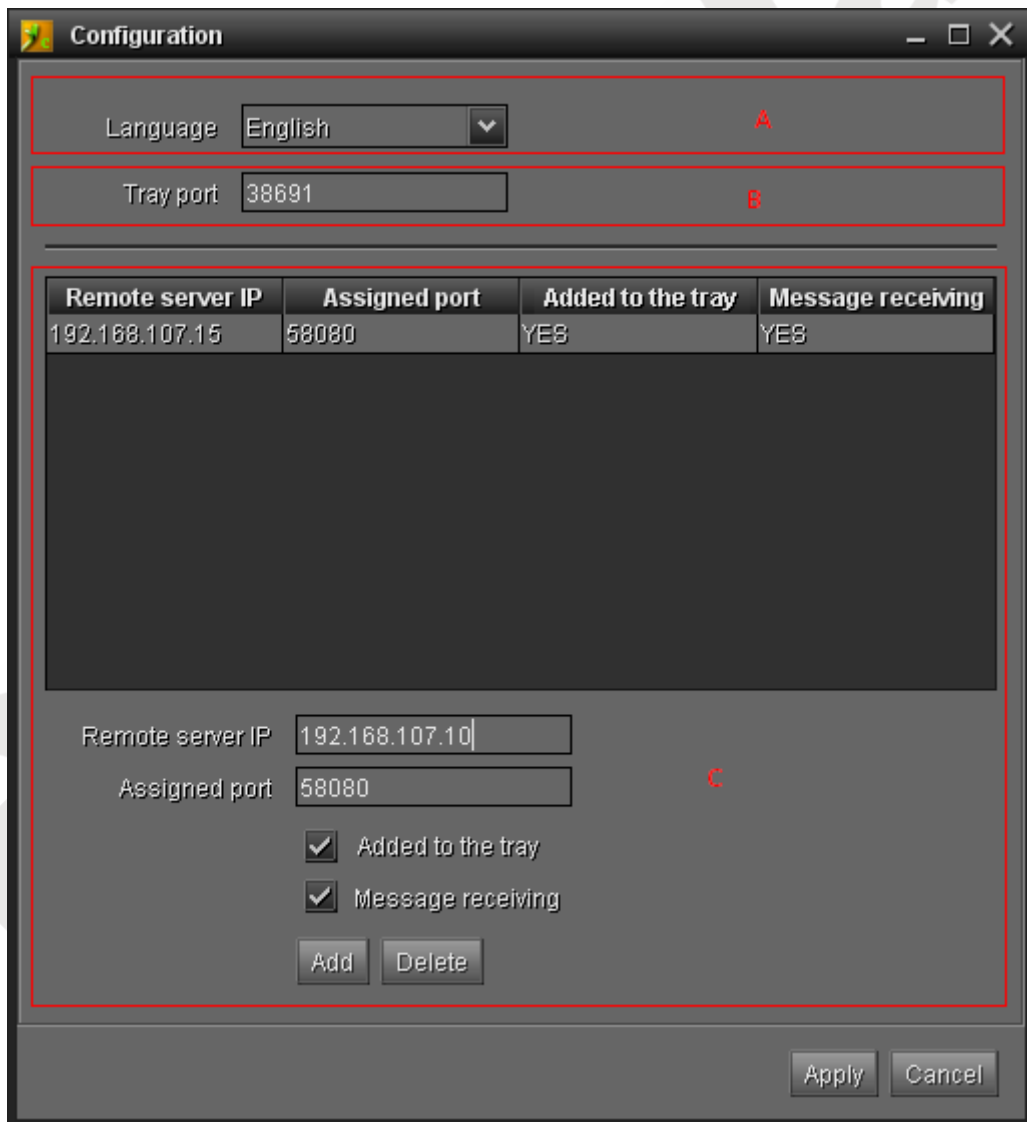
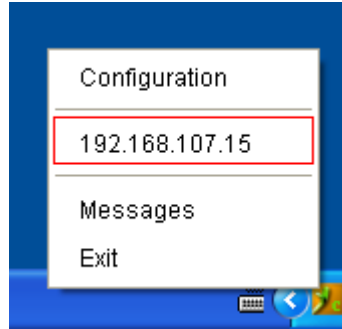


Diagram 3-3

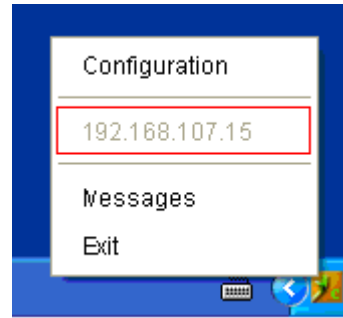
### 3.3. Quick Access to SolarPower Pro Client

When SolarPower Pro server is selected as "Add to the tray" in Configuration page, this server will be displayed in function menu with its IP address. If this server is in

accessible status, the IP address will be enabled to select as diagram 3-4. Otherwise, it will be disabled as shown in diagram 3-5.



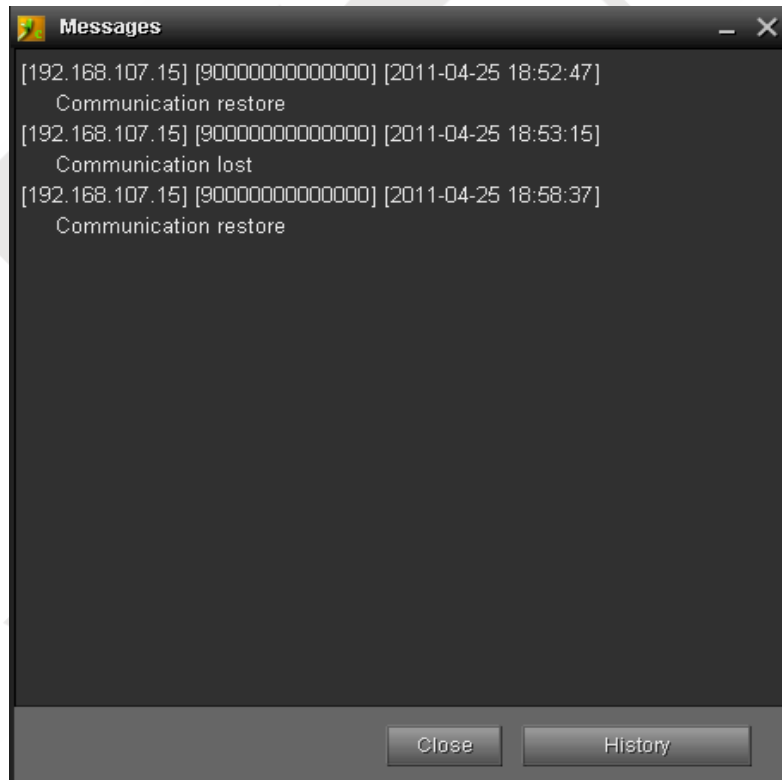
**Diagram 3-4**



**Diagram 3-5**

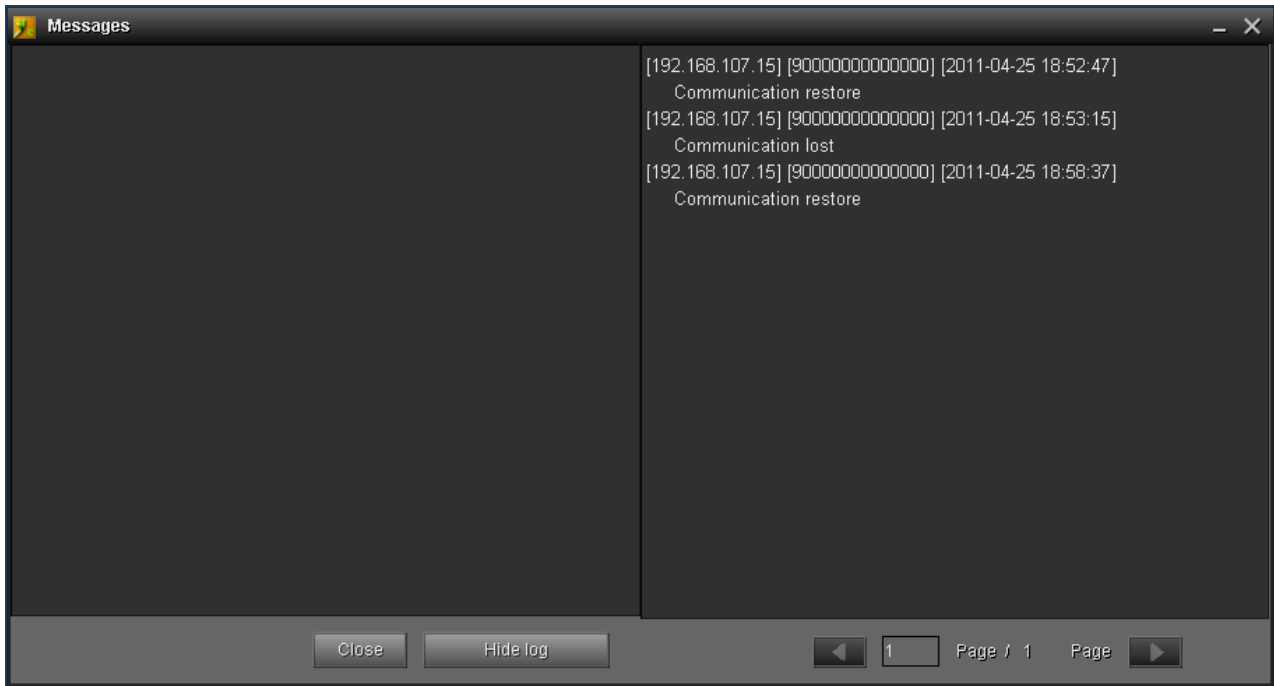
### 3.4. Message Board and Records

If it is successfully registered to service side, when any event occurs in service side with broadcast alarm, it will send alarm message to client side. At this time, the tray icon will flash. Simply click icon for detailed information. Refer to diagram 3-6.



**Diagram 3-6**

Click "History" button in Message board (Refer to Diagram 3-6) or select "Messages" in function menu (Refer to Diagram 3-4) for detailed information. Refer to Diagram 3-7 for detailed records.



**Diagram 3-7**

### **3.5. Exit**

Click "Exit" to exit the software.