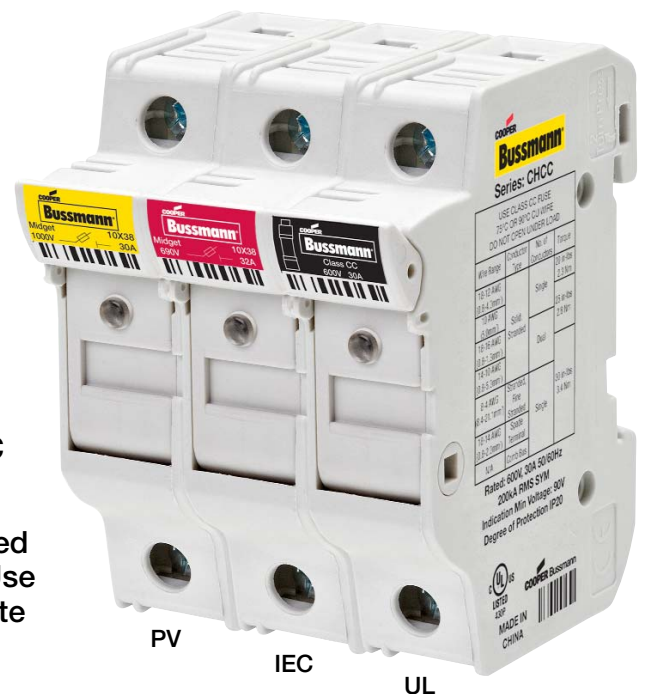


Compact Modular Fuse Holders With the Industry's Best Ratings

Finger-Safe DIN-Rail Mount Fuse Holders Protect Your Electrical System & Simplify Installation

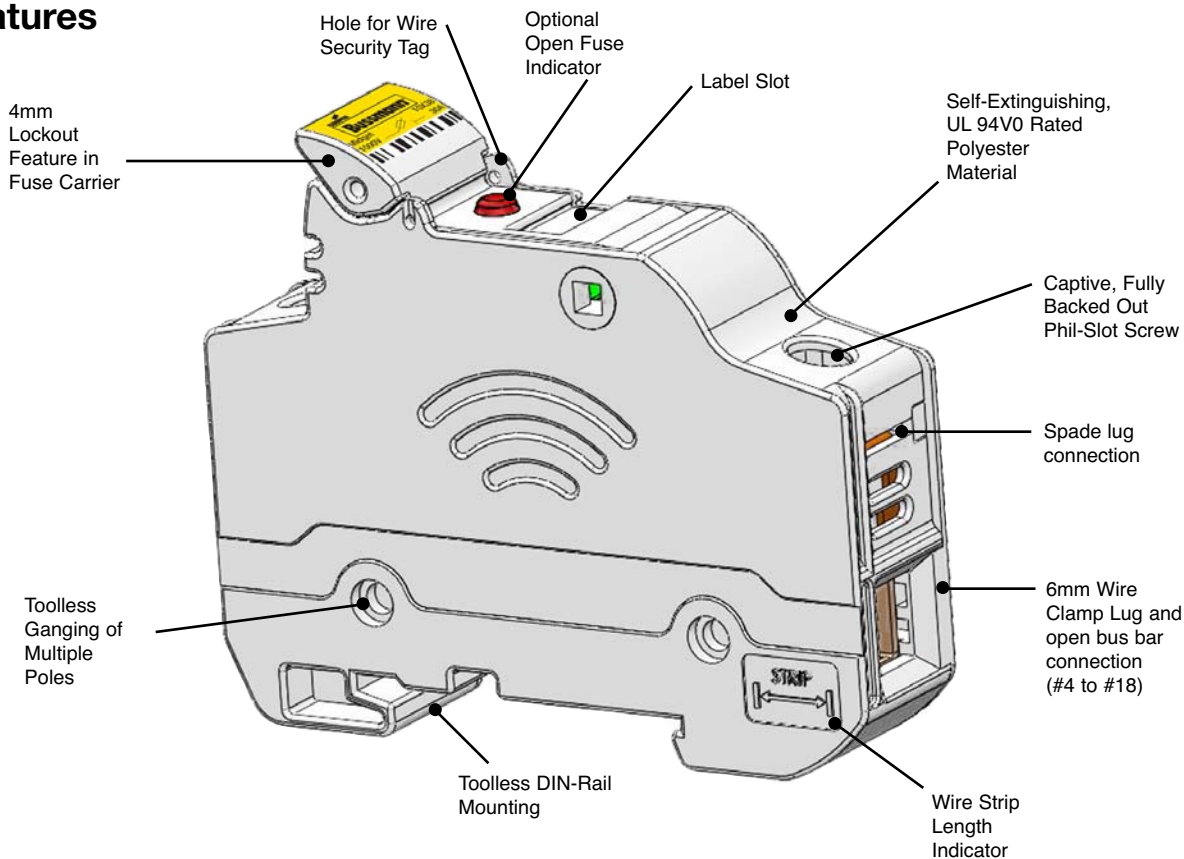
- Easy color coding for use: yellow for PV, red for IEC, and black for UL applications
- Finger-safe, high SCCR rated, Class CC and midget holders with indicator options. Also for Class J and IEC size fuses.
- Agency ratings up to 1000Vdc for use with solar PV fuses
- Available remote PLC indication with the CH-PLC module
- Rated for use with 75°C or 90°C wire, fine stranded wire, spade terminals and with comb-bus bars. Use any higher temperature rated wire with appropriate derating
- Complete range of UL Listed and high SCCR rated 1-phase and 3-phase finger-safe comb-bus bars and power feed lugs



Modular Fuse Holder Selection Table (10 x 38 and CC)

Series & Size	Catalog Number		Voltage & Current	Agency Markings	Number of Poles	Terminal Rating	SCCR Rating	Cooper Bussmann Fuses
	With Indicator	Without Indicator						
CHM 10x38 and Midget	CHM1DIU	CHM1DU	UL 600V/30A; IEC 690V/32A	cURus; IEC 60269-2	1	Solid, Stranded, Fine Stranded, Spade Lug, Comb Bus Bar; Single and Dual Wire; 75°C and 90°C Cu wire	100kA rms sym	FNQ, KLM, FNM, KTK, BAF, FWA, DCM, C10 SERIES, AGU, BAN, FWC
	CHM2DIU	CHM2DU			2			
	CHM3DIU	CHM3DU			3			
	CHM4DIU	CHM4DU			4			
	CHM1DNIU	CHM1DNU	UL 48Vdc/30A; IEC 48Vdc/32A	IEC 60269-2	1 pole + 1 neutral			
	CHM3DNIU	CHM3DNU			3 poles + 1 neutral			
	CHM1DI-48U		UL 48Vdc/30A; IEC 48Vdc/32A		1			
		CHM1DNXU	IEC 690V/32A	IEC60269-2	1 neutral	n/a	n/a	
CHPV	CHPV1IU	CHPV1U	UL & IEC; 1000Vdc/30A	UR, CSA, UL4248-18, IEC60269-1	1	75°C and 90°C Cu wire	33kA	Solar PV series
	CHPV2IU	CHPV2U			2			
CHCC Class CC	CHCC1DIU	CHCC1DU	UL 600V/30A	cULus	1	200kA rms sym	LP-CC, FNQ-R, KTK-R	
	CHCC2DIU	CHCC2DU			2			
	CHCC3DIU	CHCC3DU			3			
		CHCC1DI-48U	UL 48Vdc/30A		1			

Features

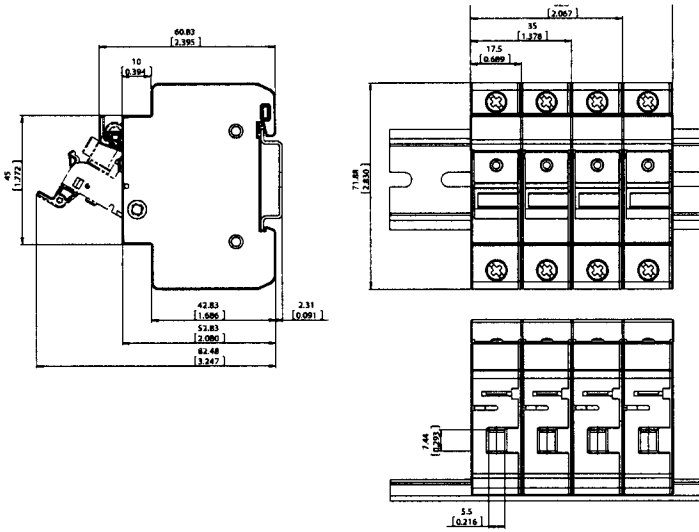


Specifications:

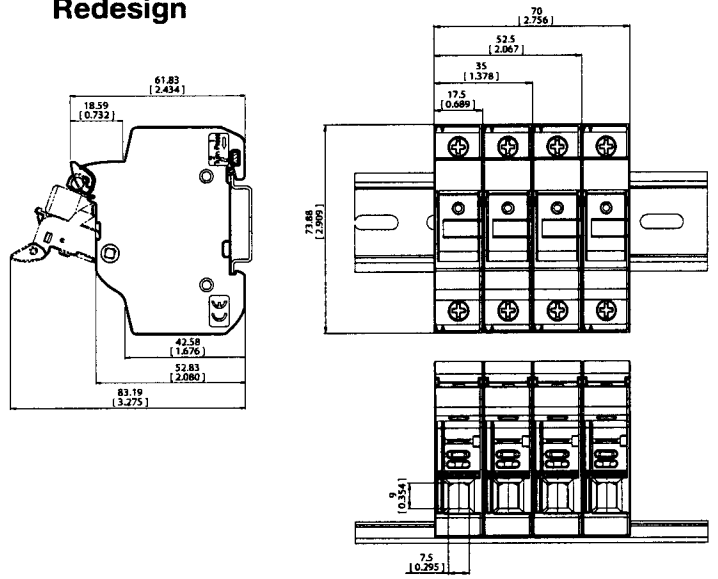
Temperature Operating Range: -20°C to +120°C (non-indicating)
 -20°C to +90°C (indicating)

Flammability: Self-extinguishable UL 94V0 rated

Old/Original



Redesign



Item	Part No.	10X38 Modular Fuse Holder
1	CHM1DNX	10x38 Fuse holder – 1N Non - Indicating
2	CHM1D	10x38 Fuse holder – 1P Non - Indicating
3	CHM1DN	10x38 Fuse holder – 1P+1N Non - Indicating
4	CHM2D	10x38 Fuse holder – 2P Non - Indicating
5	CHM3D	10x38 Fuse holder – 3P Non - Indicating
6	CHM3DN	10x38 Fuse holder – 3P+1N Non - Indicating
7	CHM4D	10x38 Fuse holder – 4P Non - Indicating
8	CHCC1D	Class CC Fuse holder – 1P Non - Indicating
9	CHCC2D	Class CC Fuse holder – 2P Non - Indicating
10	CHCC3D	Class CC Fuse holder – 3P Non - Indicating
11	CHPV1	Class gR Fuse holder – 1P Non - Indicating
12	CHM1DI	10x38 Fuse holder – 1P Neon Indication
13	CHM1DNI	10x38 Fuse holder – 1P+1N Neon Indication
14	CHM2DI	10x38 Fuse holder – 2P Neon Indication
15	CHM3DI	10x38 Fuse holder – 3P Neon Indication
16	CHM3DNI	10x38 Fuse holder – 3P+1N Neon Indication
17	CHM4DI	10x38 Fuse holder – 4P Neon Indication
18	CHM1DI-48	10x38 Fuse holder – 1P LED Indication
19	CHCC1DI	Class CC Fuse holder – 1P Neon Indication
20	CHCC2DI	Class CC Fuse holder – 2P Neon Indication
21	CHCC3DI	Class CC Fuse holder – 3P Neon Indication
22	CHCC1DI-48	Class CC Fuse holder – 1P LED Indication
23	CHPV1I	Class gR Fuse holder – 1P Neon - Indicating
24	CHM1DTI	10x38 Fuse holder – 1P Neon Indication - Torx 20 Screw
25	CH-PLC	MFH PLC Indicator accessory
26	CHPV1T	Class gR Fuse holder – 1P Non - Indicating - Torx 20 Screw
27	CHPV1TI	Class gR Fuse holder – 1P Neon - Indicating - Torx 20 Screw
28	JV-L	Multi Pole Connector Kit

Item	Part No.	Redesign 10X38 Modular Fuse Holder
1	CHM1DNXU	Neutral
2	CHM1DU	1 Pole 30A 600V UL modular fuse-holder for 10 x 38 midget fuse-link
3	CHM1DNU	1 Pole & neutral 30A 600V UL modular fuse-holder for 10 x 38 midget fuse-link
4	CHM2DU	2 Pole 30A 600V UL modular fuse-holder for 10 x 38 midget fuse-link
5	CHM3DU	3 Pole 30A 600V UL modular fuse-holder for 10 x 38 midget fuse-link
6	CHM3DNU	3 Pole & neutral 30A 600V UL modular fuse-holder for 10 x 38 midget fuse-link
7	CHM4DU	4 Pole 30A 600V UL modular fuse-holder for 10 x 38 midget fuse-link
8	CHCC1DU	1 Pole 30A 600V UL modular fuse-holder for 10 x 38 class CC fuse-link
9	CHCC2DU	2 Pole 30A 600V UL modular fuse-holder for 10 x 38 class CC fuse-link
10	CHCC3DU	3 Pole 30A 600V UL modular fuse-holder for 10 x 38 class CC fuse-link
11	CHPV1U	1 Pole 30A 1000V dc UL modular fuse-holder for 10 x 38 gPV fuse-link
12	CHPV2U	2 Pole 30A 1000V dc UL modular fuse-holder for 10 x 38 gPV fuse-link
13	CHM1DIU	1 Pole 30A 600V UL modular fuse-holder for 10 x 38 midget fuse-link with indicator
14	CHM1DNIU	1 Pole & neutral 30A 600V UL modular fuse-holder for 10 x 38 midget fuse-link with indicator
15	CHM2DIU	2 Pole 30A 600V UL modular fuse-holder for 10 x 38 midget fuse-link with indicator
16	CHM3DIU	3 Pole 30A 600V UL modular fuse-holder for 10 x 38 midget fuse-link with indicator
17	CHM3DNIU	3 Pole & neutral 30A 600V UL modular fuse-holder for 10 x 38 midget fuse-link with indicator
18	CHM4DIU	4 Pole 30A 600V UL modular fuse-holder for 10 x 38 midget fuse-link with indicator
19	CHM1DI-48U	1 Pole 30A 48V dc modular fuse-holder for 10 x 38 fuse-link (LED indicator)
20	CHCC1DIU	1 Pole 30A 600V UL modular fuse-holder for 10 x 38 class CC fuse-link with indicator
21	CHCC2DIU	2 Pole 30A 600V UL modular fuse-holder for 10 x 38 class CC fuse-link with indicator
22	CHCC3DIU	3 Pole 30A 600V UL modular fuse-holder for 10 x 38 class CC fuse-link with indicator
23	CHCC1DI-48U	1 Pole 30A 48V dc modular fuse-holder for 10 x 38 class CC fuse-link with LED indicator
24	CHPV1IU	1 Pole 30A 1000V dc UL modular fuse-holder for 10 x 38 gPV fuse-link with indicator
25	CHPV2IU	2 Pole 30A 1000V dc UL modular fuse-holder for 10 x 38 gPV fuse-link with indicator

ATTENTION

We have made improvements to our modular fuse holder design and product ratings. This flyer summarizes differences between the old/original design and the new design. For detailed specifications please refer to the datasheet.

Old/Original

Redesign

CHCC

Bussmann
Series: CHCC

UL LISTED
RATED 600V 30A 50/60HZ
2000A RMS SYM
USE CLASS CC FUSES
USE 75°C CU WIRE ONLY
DO NOT OPEN UNDER LOAD

Wire Range	Conductor Type	No. of Conductors	Termin. Torque
18-12 AWG (0.8-4.0mm ²)	Solid Stranded	Single	20 in-lbs 2.3 Nm
18 AWG (0.8mm ²)	Solid	Single	20 in-lbs 2.3 Nm
16-14 AWG (2.0-4.0mm ²)	Stranded	Single	25 in-lbs 2.8 Nm
16 AWG (2.0mm ²)	Solid	Single	25 in-lbs 2.8 Nm
14-10 AWG (2.0-8.0mm ²)	Solid	Dual	25 in-lbs 2.8 Nm
14 AWG (2.0mm ²)	Stranded	Dual	25 in-lbs 2.8 Nm

Rated: 600V, 30A 50/60Hz
2000A RMS SYM
Indication Min Voltage: 90V
Degree of Protection IP20
CE
COOPER Bussmann
MADE IN CHINA

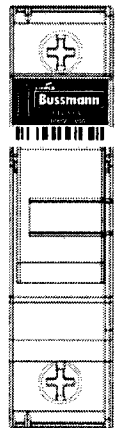
CHCC

Bussmann
Series: CHCC

USE CLASS CC FUSE
75°C OR 90°C CU WIRE
DO NOT OPEN UNDER LOAD

Wire Range	Conductor Type	No. of Conductors	Termin. Torque
18-12 AWG (0.8-4.0mm ²)	Solid	Single	20 in-lbs 2.3 Nm
18 AWG (0.8mm ²)	Solid Stranded	Single	25 in-lbs 2.8 Nm
16-14 AWG (2.0-4.0mm ²)	Solid	Dual	25 in-lbs 2.8 Nm
14-10 AWG (2.0-8.0mm ²)	Stranded	Single	30 in-lbs 3.4 Nm
14 AWG (2.0mm ²)	Stranded	Single	30 in-lbs 3.4 Nm
8-4 AWG (8.4-21.1mm ²)	Stranded	Single	30 in-lbs 3.4 Nm
8-4 AWG (8.4-21.1mm ²)	Stranded	Single	30 in-lbs 3.4 Nm
16-14 AWG (2.0-4.0mm ²)	Stranded	Single	25 in-lbs 2.8 Nm
14-10 AWG (2.0-8.0mm ²)	Stranded	Single	25 in-lbs 2.8 Nm
N/A	Comb Bus		

Rated: 600V, 30A 50/60Hz
2000A RMS SYM
Indication Min Voltage: 90V
Degree of Protection IP20
CE
COOPER Bussmann
MADE IN CHINA



CHM

Bussmann
Series: CHM

UL LISTED
RATED 600V 30A 50/60HZ
2000A RMS SYM
USE 75°C CU WIRE ONLY
DO NOT OPEN UNDER LOAD

Wire Range	Conductor Type	No. of Conductors	Termin. Torque
18-12 AWG (0.8-4.0mm ²)	Solid Stranded	Single	20 in-lbs 2.3 Nm
18 AWG (0.8mm ²)	Solid	Single	20 in-lbs 2.3 Nm
16-14 AWG (2.0-4.0mm ²)	Stranded	Single	25 in-lbs 2.8 Nm
16 AWG (2.0mm ²)	Solid	Single	25 in-lbs 2.8 Nm
14-10 AWG (2.0-8.0mm ²)	Solid	Dual	25 in-lbs 2.8 Nm
14 AWG (2.0mm ²)	Stranded	Dual	25 in-lbs 2.8 Nm

IEC 60282-2
Degree of Protection IP20
600V, 30A, 3W
WIRE RANGE 1-10mm²
TORQUE: 2-2.8Nm
MADE IN CHINA
CE
COOPER Bussmann

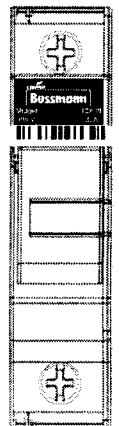
CHM

Bussmann
Series: CHM

USE MIDGET / 1000V FUSE
75°C OR 90°C CU WIRE
DO NOT OPEN UNDER LOAD

Wire Range	Conductor Type	No. of Conductors	Termin. Torque
18-12 AWG (0.8-4.0mm ²)	Solid	Single	20 in-lbs 2.3 Nm
18 AWG (0.8mm ²)	Solid Stranded	Single	25 in-lbs 2.8 Nm
16-14 AWG (2.0-4.0mm ²)	Solid	Dual	25 in-lbs 2.8 Nm
14-10 AWG (2.0-8.0mm ²)	Stranded	Single	30 in-lbs 3.4 Nm
14 AWG (2.0mm ²)	Stranded	Single	30 in-lbs 3.4 Nm
8-4 AWG (8.4-21.1mm ²)	Stranded	Single	30 in-lbs 3.4 Nm
8-4 AWG (8.4-21.1mm ²)	Stranded	Single	30 in-lbs 3.4 Nm
16-14 AWG (2.0-4.0mm ²)	Stranded	Single	25 in-lbs 2.8 Nm
14-10 AWG (2.0-8.0mm ²)	Stranded	Single	25 in-lbs 2.8 Nm
N/A	Comb Bus		

Rated: 600V, 30A 50/60Hz
1000A RMS SYM 3W
Indication Min Voltage: 90V
IEC: 60282-2 600V-30A 3W
Degree of Protection IP20
CE
COOPER Bussmann
MADE IN CHINA



CHPV

Bussmann
Series: CHPV

UL LISTED
RATED 1000V 30A 336A IR
USE 75°C CU WIRE ONLY
DO NOT OPEN UNDER LOAD

Wire Range	Conductor Type	No. of Conductors	Termin. Torque
18-12 AWG (0.8-4.0mm ²)	Solid Stranded	Single	20 in-lbs 2.3 Nm
18 AWG (0.8mm ²)	Solid	Single	20 in-lbs 2.3 Nm
16-14 AWG (2.0-4.0mm ²)	Stranded	Single	25 in-lbs 2.8 Nm
16 AWG (2.0mm ²)	Solid	Single	25 in-lbs 2.8 Nm
14-10 AWG (2.0-8.0mm ²)	Solid	Dual	25 in-lbs 2.8 Nm
14 AWG (2.0mm ²)	Stranded	Dual	25 in-lbs 2.8 Nm

IEC 60282-1
Degree of Protection IP20
1000V, 30A, 3.5W
WIRE RANGE 1-10mm²
TORQUE: 2-2.8Nm
MADE IN CHINA
CE
COOPER Bussmann

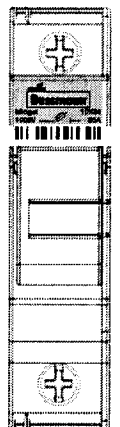
CHPV

Bussmann
Series: CHPV

USE MIDGET / 1000V FUSE
75°C OR 90°C CU WIRE
DO NOT OPEN UNDER LOAD

Wire Range	Conductor Type	No. of Conductors	Termin. Torque
18-12 AWG (0.8-4.0mm ²)	Solid	Single	20 in-lbs 2.3 Nm
18 AWG (0.8mm ²)	Solid Stranded	Single	25 in-lbs 2.8 Nm
16-14 AWG (2.0-4.0mm ²)	Solid	Dual	25 in-lbs 2.8 Nm
14-10 AWG (2.0-8.0mm ²)	Stranded	Single	30 in-lbs 3.4 Nm
14 AWG (2.0mm ²)	Stranded	Single	30 in-lbs 3.4 Nm
8-4 AWG (8.4-21.1mm ²)	Stranded	Single	30 in-lbs 3.4 Nm
8-4 AWG (8.4-21.1mm ²)	Stranded	Single	30 in-lbs 3.4 Nm
16-14 AWG (2.0-4.0mm ²)	Stranded	Single	25 in-lbs 2.8 Nm
14-10 AWG (2.0-8.0mm ²)	Stranded	Single	25 in-lbs 2.8 Nm
N/A	Comb Bus		

UL4948-18
Rated: 1000V, 30A 336A RMS SYM
Indication Min Voltage: 90V
IEC: 60282-1
Degree of Protection IP20
Rated: 1000V, 3.5W
CE
COOPER Bussmann
MADE IN CHINA



The only controlled copy of this Data Sheet is the electronic read-only version located on the Cooper Bussmann Network Drive. All other copies of this document are by definition uncontrolled. This bulletin is intended to clearly present comprehensive product data and provide technical information that will help the end user with design applications. Cooper Bussmann reserves the right, without notice, to change design or construction of any products and to discontinue or limit distribution of any products. Cooper Bussmann also reserves the right to change or update, without notice, any technical information contained in this bulletin. Once a product has been selected, it should be tested by the user in all possible applications.

Old/Original UPC Codes

Part Number	Description	UPC
JV-L	CC and Midget MFH MultiPhase Connection	51712245388
CH-PLC	MFH PLC Indicator accessory	51712242226
CHCC1D	1 POLE CLASS CC HOLDER	51712501972
CHCC1DI	1P,CLASS CC HOLDER,IND	51712501989
CHCC1DI-48	Class CC Fuse holder – 1P LED Indication	51712242196
CHCC2D	2 POLE,CLASS CC HOLDER	51712501996
CHCC2DI	2P,CLASS CC HOLDER,IND	51712502009
CHCC3D	3 POLE,CLASS CC HOLDER	51712502016
CHCC3DI	3P,CLASS CC HOLDER,IND	51712502023
CHM1D	IND.FUSEHOLDER 10X38MM 1P	51712502030
CHM1DI	IND.FUSEHOLDER 10X38MM	51712502047
CHM1DI-48	10x38 Fuse holder – 1P LED Indication	51712242165
CHM1DN	IND.FUSEHOLDER 10X38MM	51712501491
CHM1DNI	IND.FUSE HOLDER 10X38MM	51712501507
CHM1DNX	NEUTRAL FUSE BASE	51712501460
CHM2D	IND.FUSEHOLDER 10X38MM 2P	51712502054
CHM2DI	IND.FUSEHOLDER 10X38MM 2P	51712502061
CHM3D	IND.FUSEHOLDER 10X38MM 3P	51712501446
CHM3DI	IND.FUSEHOLDER 10X38MM 3P	51712501453
CHM3DN	IND.FUSEHOLDER 10X38MM	51712501538
CHM3DNI	IND.FUSEHOLDER 10X38MM	51712501545
CHM4D	IND.FUSEHOLDER 10X38MM 4P PM F	51712501552
CHM4DI	IND.FUSEHOLDER 10X38MM	51712501569
CHPV1	1 pole, 10x38, 1000VDC PV Holder, non-in	51712242202
CHPV1I	1 pole, 10x38, 1000VDC PV Holder, with i	51712242219
CHM1DTI	EU - 10x38 Torx screw Fuse holder – 1P N	51712242172
CHPV1T	EU - Class gR Torx screw Fuse holder – 1	51712245364
CHPV1TI	EU - Class gR Torx screw Fuse holder – 1	51712245371

Redesign UPC Codes

Part Number	Description	UPC
JV-L	CC and Midget MFH MultiPhase Connection	51712245388
CH-PLC	MFH PLC Indicator accessory	51712242226
CHCC1DU	1Pole 30A 600V MFH For 10X38 Class CC	51712362658
CHCC1DIU	1P 10X38MFH30A 600V Class CC -indicator	51712362665
CHCC1DI-48U	1P 30A 48Vdc10X38 Class CC fuse with LED	51712362818
CHCC2DU	2Pole 30A 600V MFH For 10X38 Class CC	51712362672
CHCC2DIU	2P 10X38MFH 30A 600V Class CC-indicator	51712362689
CHCC3DU	3Pole 30A 600V MFH For 10X38 Class CC	51712362696
CHCC3DIU	3P 10X38 MFH 30A 600V Class CC-indicator	51712362702
CHM1DU	1P 30A 600V MFH For 10X38 Midget fuse	51712362597
CHM1DIU	1P 10X38MFH30A 600VMidget -indicator/Neu	51712362757
CHM1DI-48U	1P 10X38MFH30A 48VdcMidget-LED indicator	51712366212
CHM1DNU	1P&Neutral 10X38MFH30A 600V for Midget	51712362603
CHM1DNIU	1P 10X38MFH30A 600V Midget-indicator	51712362764
CHM1DNXU	10X38MFH Neutral	51712362580
CHM2DU	2Pole 30A 600V MFH For 10X38 Midget fuse	51712362610
CHM2DIU	2P 10X38MFH30A 600V Midget - indicator	51712362771
CHM3DU	3Pole 30A 600V MFH For 10X38 Midget fuse	51712362627
CHM3DIU	3P 10X38MFH30A 600V Midget - indicator	51712362788
CHM3DNIU	3P&Neutral 30A 600V MFH For 10X38 Midget	51712362634
CHM3DNIU	3P 10X38MFH30A 600V Midget-indicator/Neu	51712362795
CHM4DU	4Pole 30A 600V MFH For 10X38 Midget fuse	51712362641
CHM4DIU	4P 10X38MFH30A 600V Midget withindicator	51712362801
CHPV1U	1Pole 30A 1000Vdc MFH For 10x38 Gpv	51712362719
CHPV1IU	1P MFH For 10x38 gPV fuse with indicator	51712362726
CHPV2IU	2P 10x38MFH30A1000Vdc gPV with indicator	51712362740
CHPV2U	2P 30A 1000Vdc MFH For 10x38 gPV	51712362733

The only controlled copy of this Data Sheet is the electronic read-only version located on the Cooper Bussmann Network Drive. All other copies of this document are by definition uncontrolled. This bulletin is intended to clearly present comprehensive product data and provide technical information that will help the end user with design applications. Cooper Bussmann reserves the right, without notice, to change design or construction of any products and to discontinue or limit distribution of any products. Cooper Bussmann also reserves the right to change or update, without notice, any technical information contained in this bulletin. Once a product has been selected, it should be tested by the user in all possible applications.